

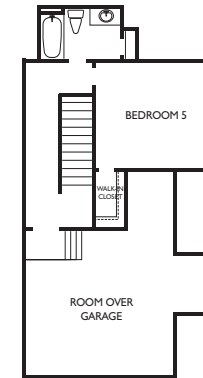
NORTH SHORE AT RIDGELY MANOR

THE LONGBROOKE

BY GRAF CONSTRUCTION

Beautiful 3200 sq ft brick ranch with columns accenting a covered porch. This home will have raised panel maple cabinets w/ granite counter tops. Very open floor plan with a large kitchen and a breakfast area where you can walk out to a covered back porch. High ceilings with hard wood flooring thru out home with ceramic tile in the kitchen,

bath and utility room, built in book cases on each side of the fireplace in the open family room. This home comes with 5 bedrooms, 3 1/2 baths, media room, walk in closets in all bedrooms, very spacious master bedroom that is on the first floor with ceramic tile in master shower. You will have a \$3,000 lighting allowance and a \$3,000 appliance allowance.



Builder Highlights: Dennis Graf has been building custom homes since 1992, taking particular care to work with his clients individually throughout the entire construction process. A graduate of Virginia Tech, Dennis earned a degree in mechanical engineering and worked in that field before steering his career towards home building. Strictly a custom builder, Dennis constructs homes of all

architectural styles to suit his homeowners' needs. His showcase homes have won an impressive 25 awards in past shows. Among them have been Critics' Choice gold award, the Past Presidents' and People's Choice awards for best in show, as well as awards for most creative and best craftsmanship.



SALES CENTER
(757) 554-0315

WWW.NORTHSHOREATRIDGELYMANOR.COM



Builder reserves the right to change, prices, plans, components and specification, to withdraw any plan, without notice. All illustrations are artists concepts and accuracy is not guaranteed. Extra-cost options may be shown in models or in illustrations. Individual homes may differ from the models or from each other depending on field conditions. Unauthorized use of these plans is prohibited by copyright law.

